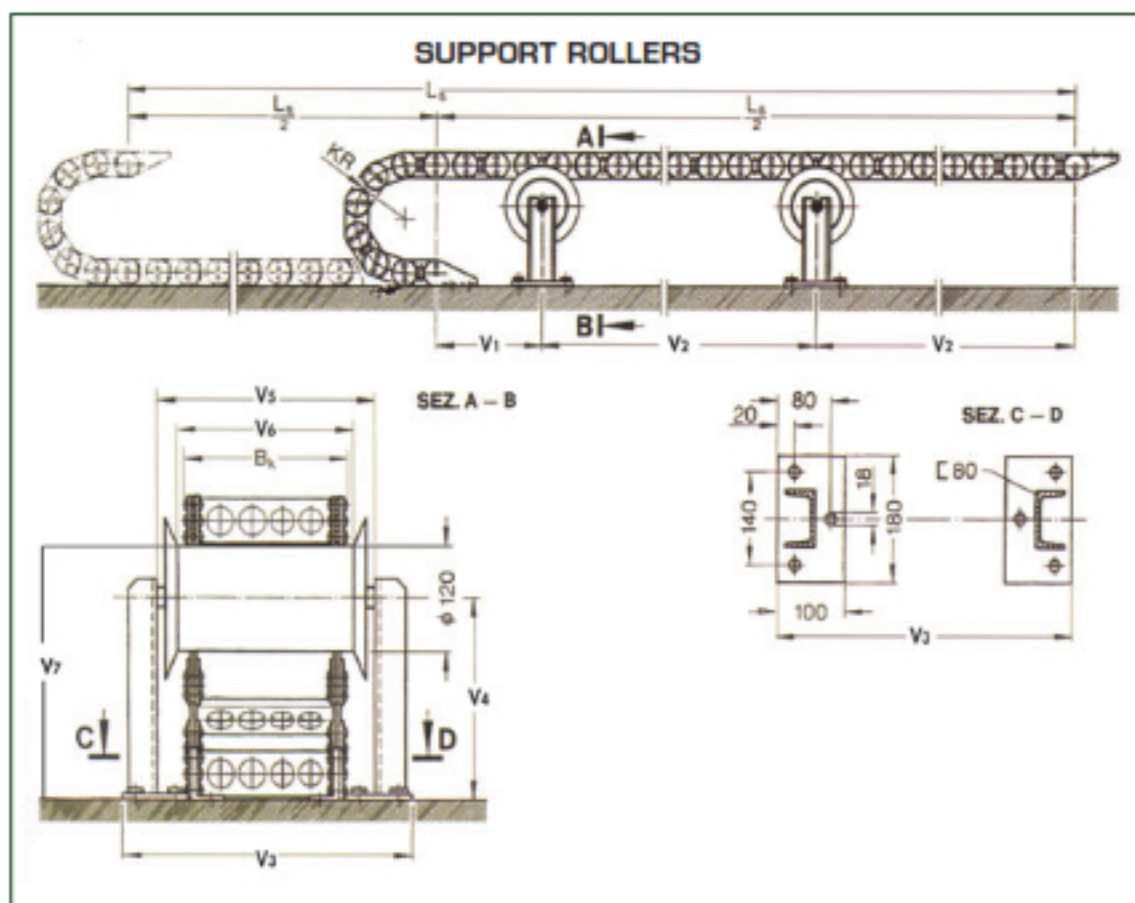


Special applications and accessories

Support rollers: Support rollers: they are used when the self-bearing capacity of steel cable carriers are limited in relation to the additional weight and to the stroke length



Cable carrier	V ₆	V ₅	V ₃	V ₄
10 - 065	B _K + 15	B _K + 59	B _K + 169	2 KR - 60
10 - 095	B _K + 20	B _K + 64	B _K + 174	2 KR - 60
10 - 125	B _K + 25	B _K + 69	B _K + 179	2 KR - 60
10 - 180	B _K + 30	B _K + 74	B _K + 184	2 KR - 60

$$V_1 = 300 \text{ mm} \quad V_2 = \frac{L_5}{4} - 150 \text{ mm} \quad V_7 = (H + z) - h \text{ [band height]}$$